

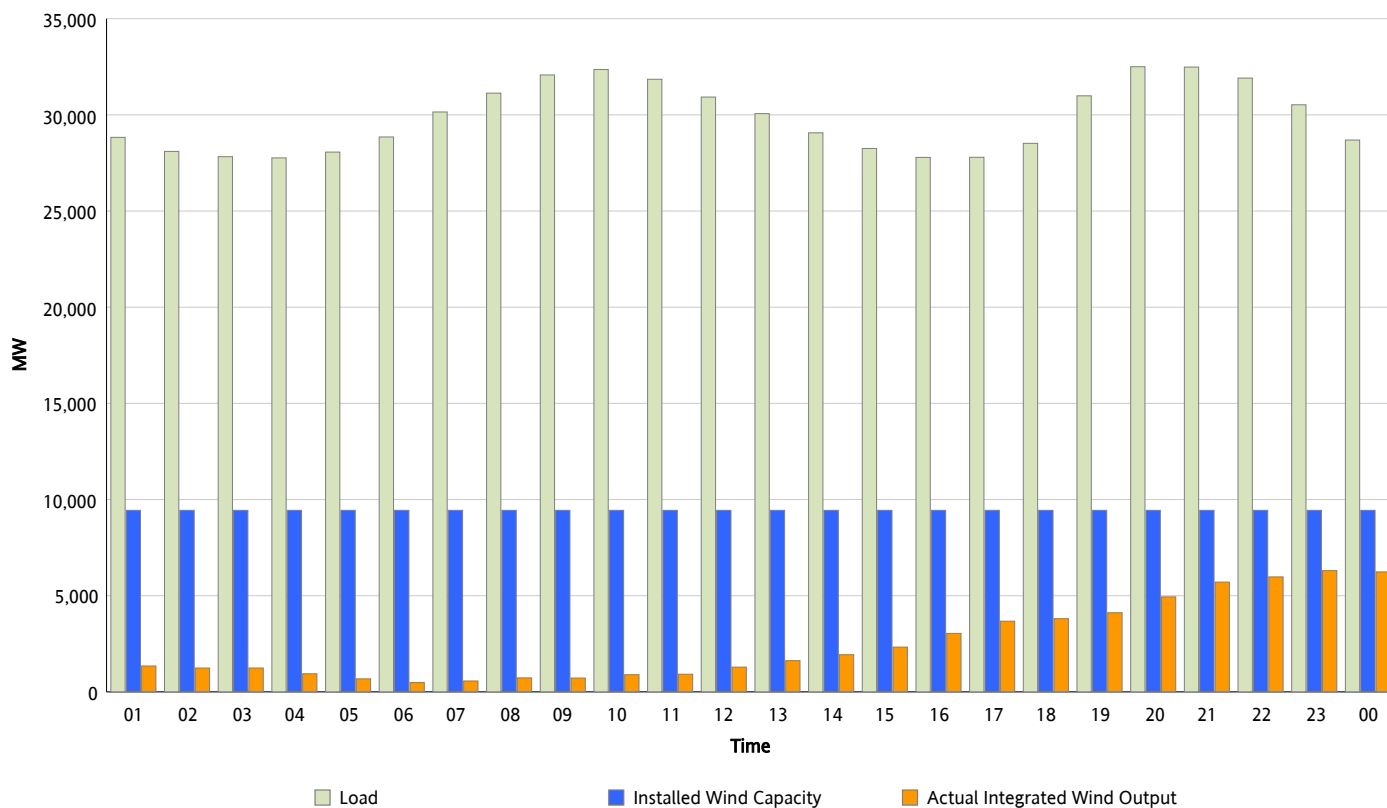


ERCOT Grid Operations

Wind Integration Report : 02/19/2012

Peak Load	32,505 MW
Load Peak Hour (HE)	20
Wind Over Peak	4,938 MW
Wind Record 10/07/11	7,400 MW
Max Wind Value*	6,888 MW
Wind Peak Time	22:35
Wind Integration %	22.6 %

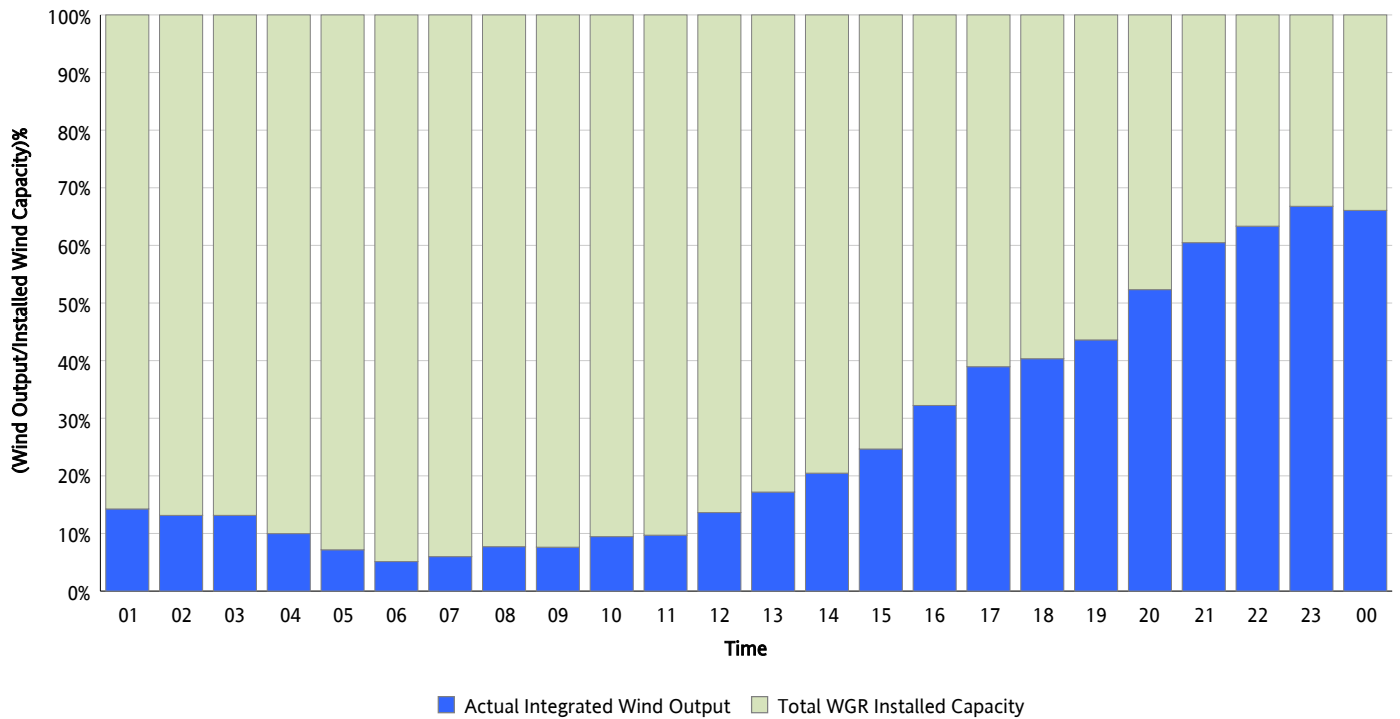
Hourly Average Actual Load vs. Actual Wind Output
02/19/2012



* Wind Max represents the instantaneous value and the rest of the values are integrated over the hour

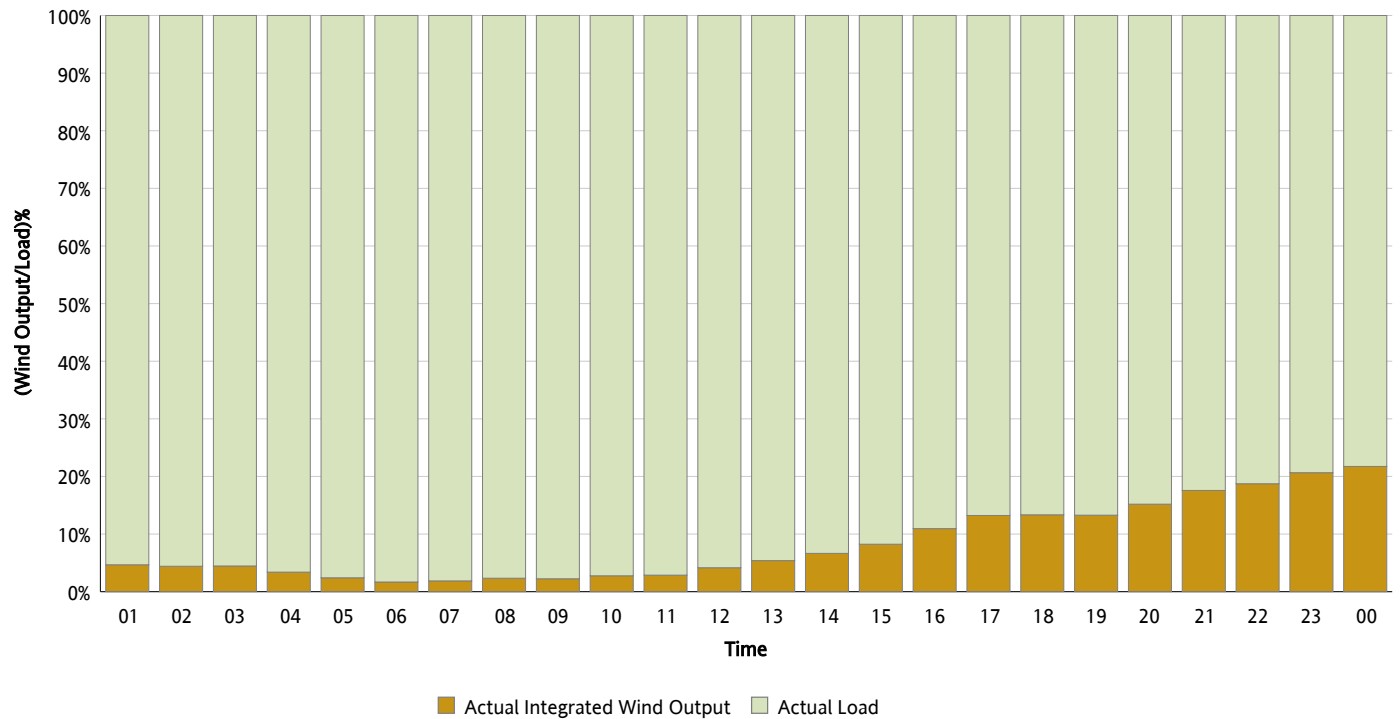
Actual Wind Output as a Percentage of the Total Installed Wind Capacity

02/19/2012



Actual Wind Output as a Percentage of the ERCOT Load

02/19/2012



ERCOT Load vs. Actual Wind Output

02/12/2012 - 02/19/2012

